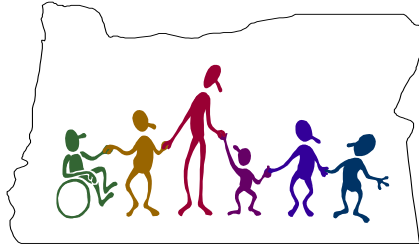


The Inclusive Child Care Program



No matter what their abilities or needs, all children are children first.

The goals of the Inclusive Child Care Program are:

- 1) To support access to appropriate child care for families of children with disabilities, emotional/behavioral disorders, or special health care needs; and,
- 2) To help all children be in inclusive child care settings with their peers.

The Inclusive Child Care Program serves children, families, child care providers and communities through:

- ***Child care subsidies.*** The program coordinates subsidies that can help with costs of accommodations or supports that are necessary for safe, healthy child care for some children.

Families may be eligible when parents are employed, students, or receiving child care assistance through the Oregon Department of Human Services. Family income must be less than \$5,089 per month for a family of 4. Eligible children and youth may be birth to 17 years of age and need a higher level of care and supervision.

- ***Individualized planning*** to support stable child care placements.
- ***Training and Consultation*** to support child care providers in their efforts to include children with diverse abilities and needs.
- ***Information on community, state and national resources*** that support inclusive child care.

How is “inclusive child care” different?

It isn't. Inclusive child care just means that children and youth with and without with disabilities, emotional/behavioral disorders, or special health care needs are **all** together in child care or out-of-school time programs. It also means that **all** children and youth participate in **all** of the setting's daily routines and activities.

All child care and out-of-school time programs have the potential to be fully inclusive.

The Inclusive Child Care Program serves children and families throughout Oregon.

To make referrals or for more information, please contact:

Inclusive Child Care Program
Portland: 971-673-2286
Toll free: 1-866-837-0250
Email: contact.iccp@state.or.us
Mailing Address: 600 NW 14th Ave., Suite 100,
Portland, OR 97209
Website: <http://oregoninclusivecc.org>



The Inclusive Child Care Program is a program of the Oregon Council on Developmental Disabilities through funding from the Oregon Department of Education Office of Child Care and the Oregon Department of Human Services

08/22/14